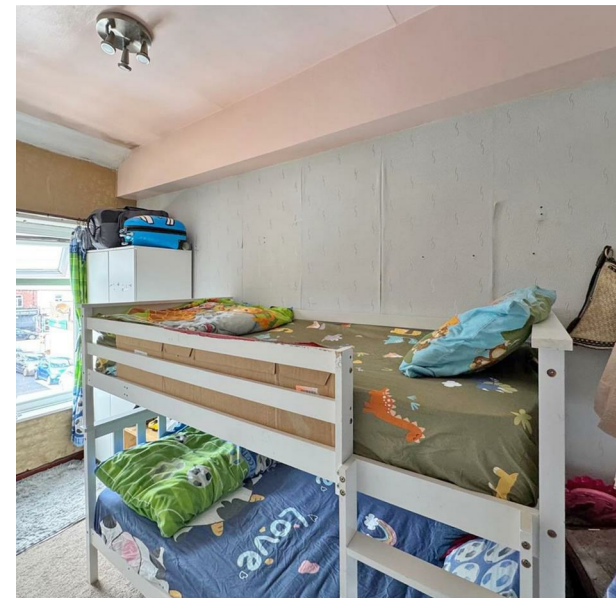


Earnshaw Street, Bolton, BL3 3LY

£165,000

Council Tax Band: A



Spread over two well-designed levels, this three-bedroom leasehold terrace offers approx. 840 sq ft of thoughtfully arranged living space ideal for family life or investment.

This charming terraced home features a spacious lounge, offering a warm front reception area bathed in natural light from large windows, creating a cosy and inviting atmosphere. The versatile dining room serves as an ideal space for family meals, entertaining guests, or even a home office setup.

Its contemporary kitchen is both stylish and functional, fitted with sleek wall and base units, an integrated oven and hob, and modern splashbacks for a polished finish. Upstairs, there are three comfortable bedrooms, including a master with ample storage space, and two additional rooms perfect for children, guests, or study use. The family bathroom is fresh and practical, comprising a full three-piece suite with a bath and electric shower, WC, and sink—designed for ease and comfort.

Location Highlights

- Schools: Close to King’s Leadership Academy and other local schools
- Shops & Essentials: Near Asda Daubhill, pharmacies, and convenience stores
- Transport Links: Quick access to Manchester Road, Lever Edge Lane, and M61
- Community Amenities: Parks, places of worship, and cafés nearby



404 Derby Street, Bolton, BL3 6LS
01204 589600
bolton@localagent.co.uk
www.openhousebolton.co.uk

